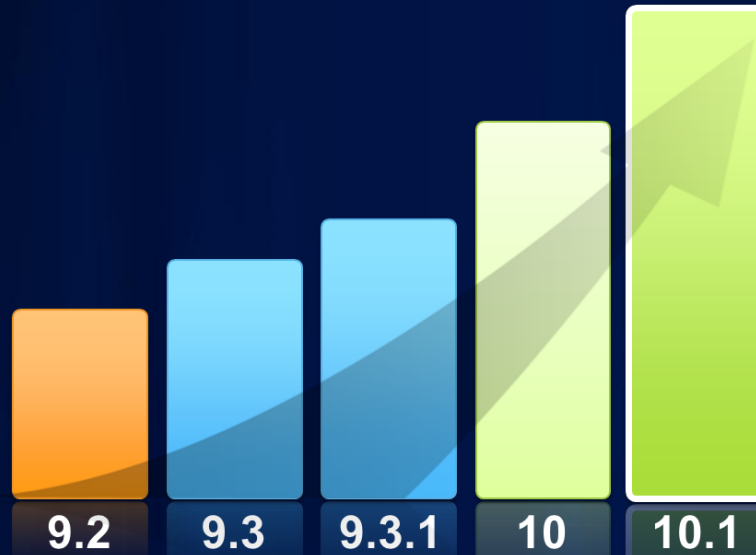


What's New in ArcGIS for Server 10.1

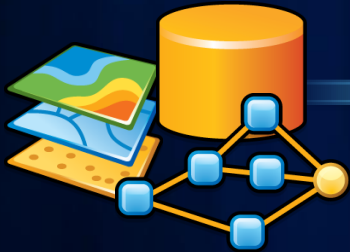
Josh Venman & Phil Persson

ArcGIS Server 10.1



Vision

Powerful
GIS capabilities



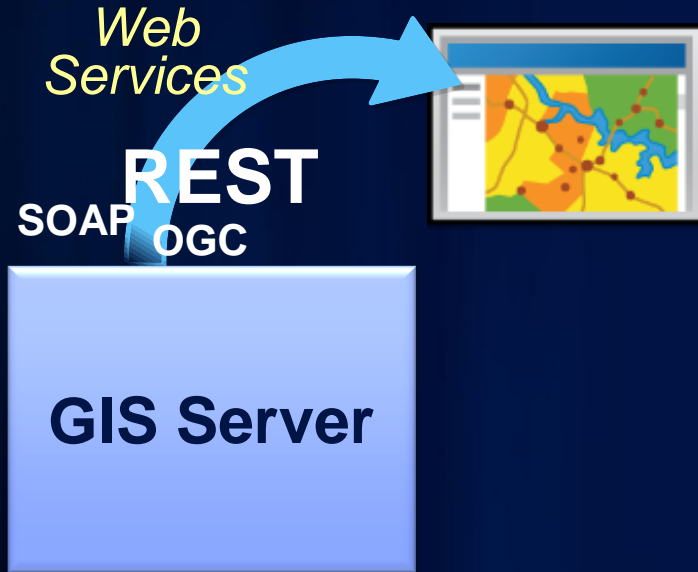
Delivered as
Web services



To help solve real problems
by real people



Vision



Simpler

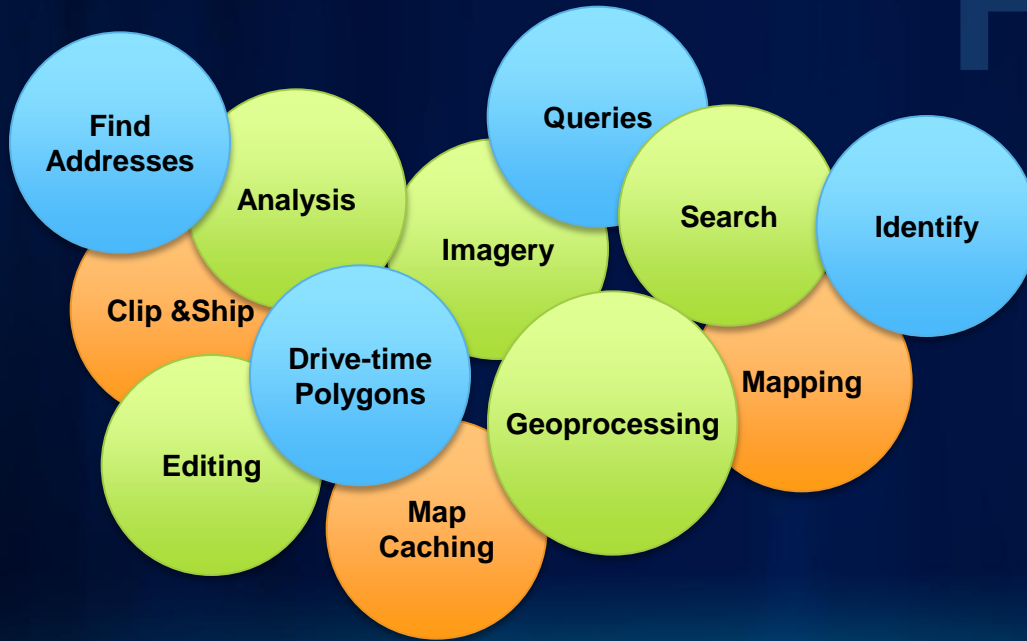
Pure GIS Services Server

New Architecture

Admin REST API
Easy to install, configure and administer
Linux friendly

Vision

Faster



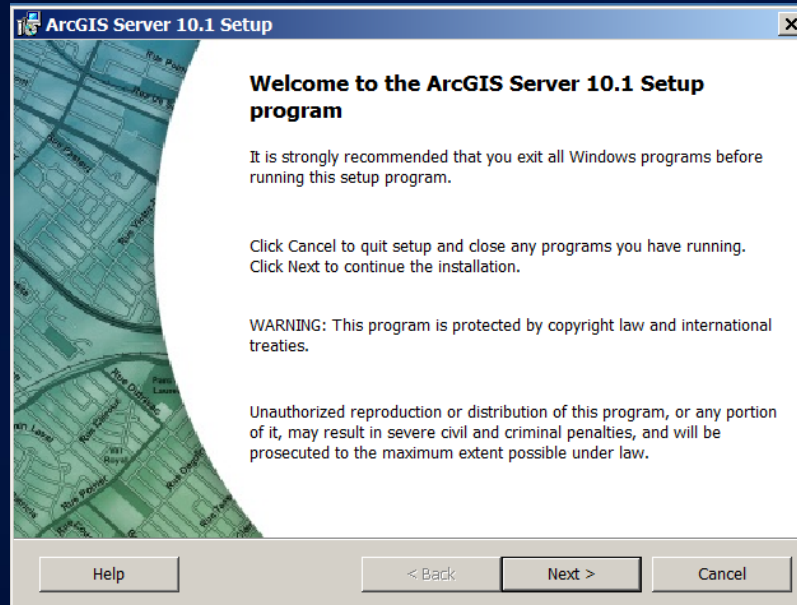
Native 64-Bit

Code optimizations

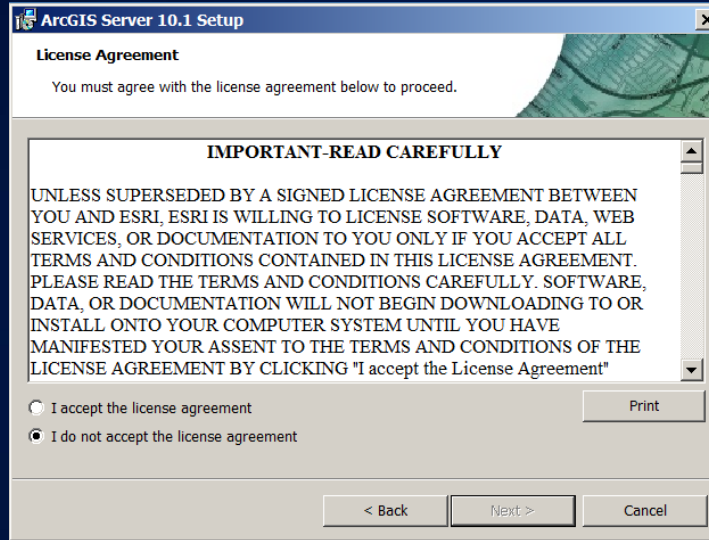
Installation

Simplified Setup Experience

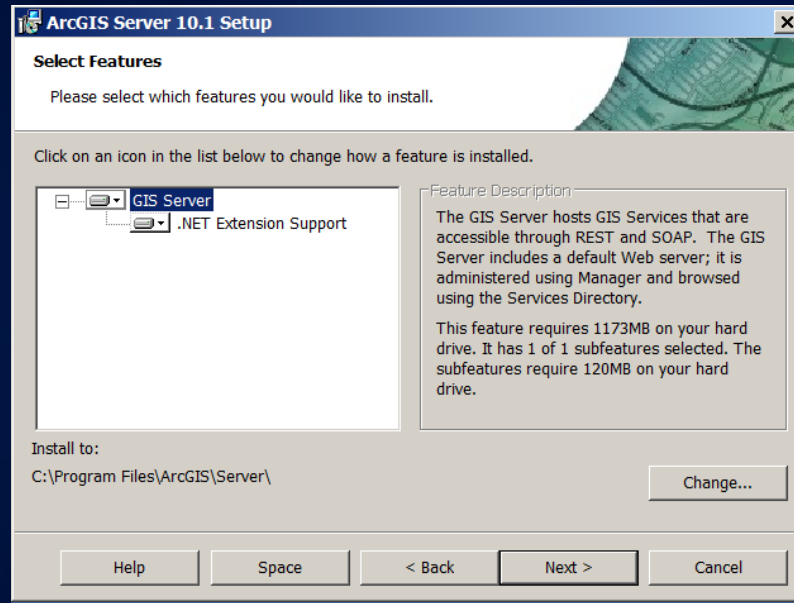
ArcGIS Server 10.1 Setup — Windows



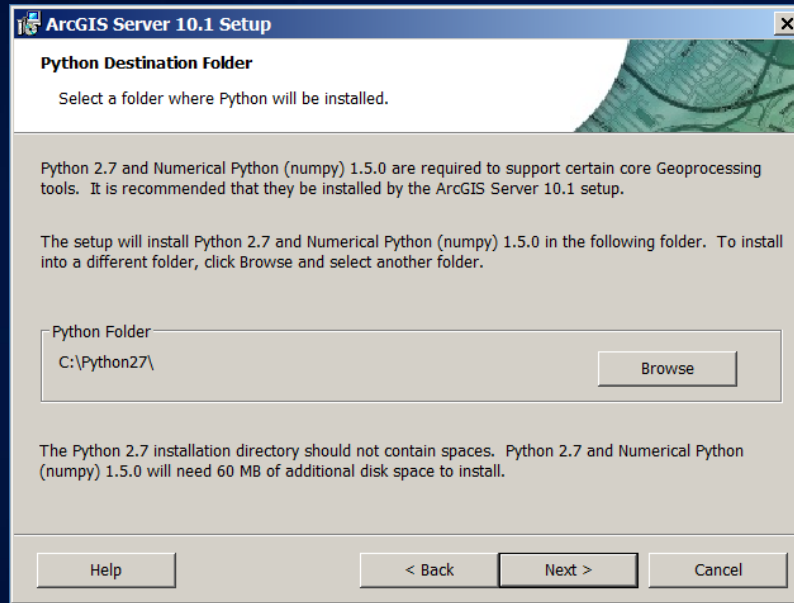
License Agreement



Select Features



Python



Run As Account for ArcGIS Server

The screenshot shows a Windows-style dialog box titled "ArcGIS Server 10.1 Setup". The main heading is "Specify GIS Server Account". Below the heading is the instruction: "Specify the account that the ArcGIS Server processes will run as." There are two radio button options. The first option, "Specify the account name and password:", is selected. It includes three text input fields: "ArcGIS Server Account:" (containing "arcgis"), "Password:", and "Confirm password:". The second option, "I have a configuration file with the account information generated by a previous run of this setup.", is unselected. It includes a "Filename:" label and a text input field with a folder icon to its right. At the bottom of the dialog are four buttons: "Help", "< Back", "Next >", and "Cancel".

ArcGIS Server 10.1 Setup

Specify GIS Server Account

Specify the account that the ArcGIS Server processes will run as.


Specify the account name and password:

ArcGIS Server Account:

Password:

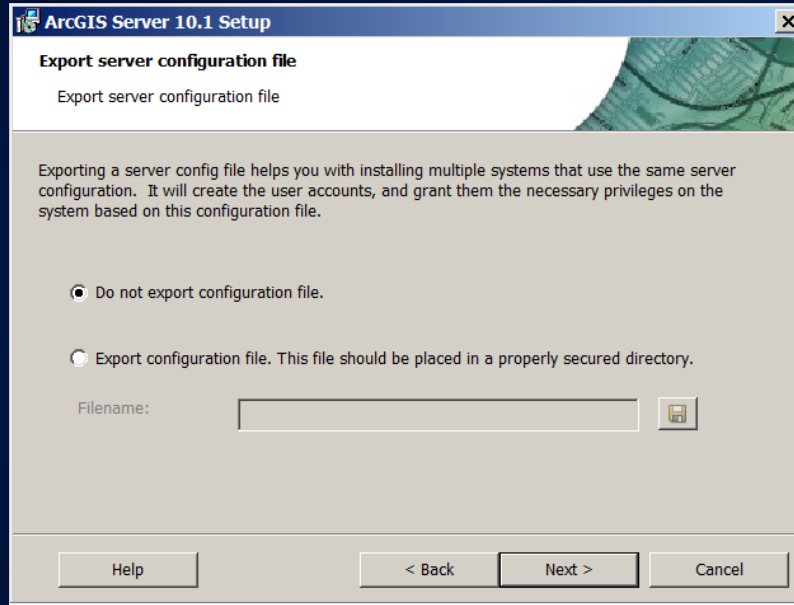
Confirm password:

I have a configuration file with the account information generated by a previous run of this setup.

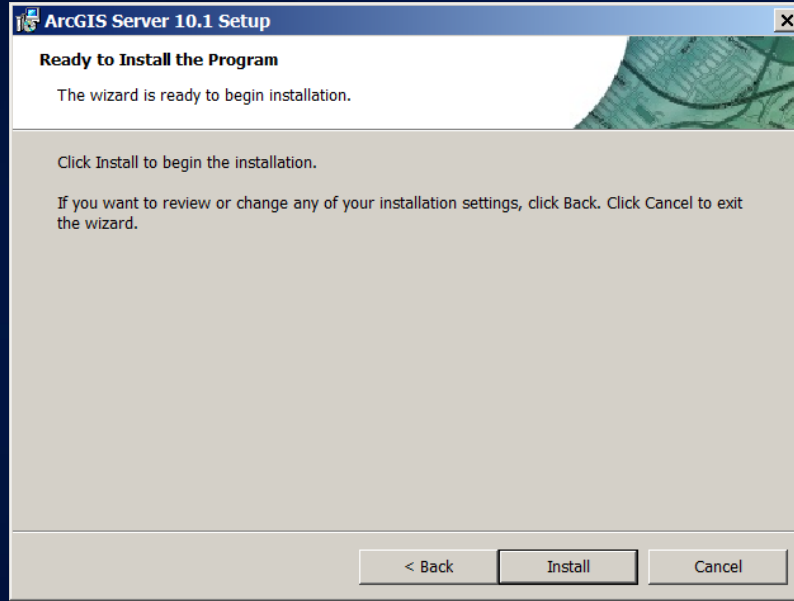
Filename: 

Help < Back Next > Cancel

Run As Account for ArcGIS Server



Start Install

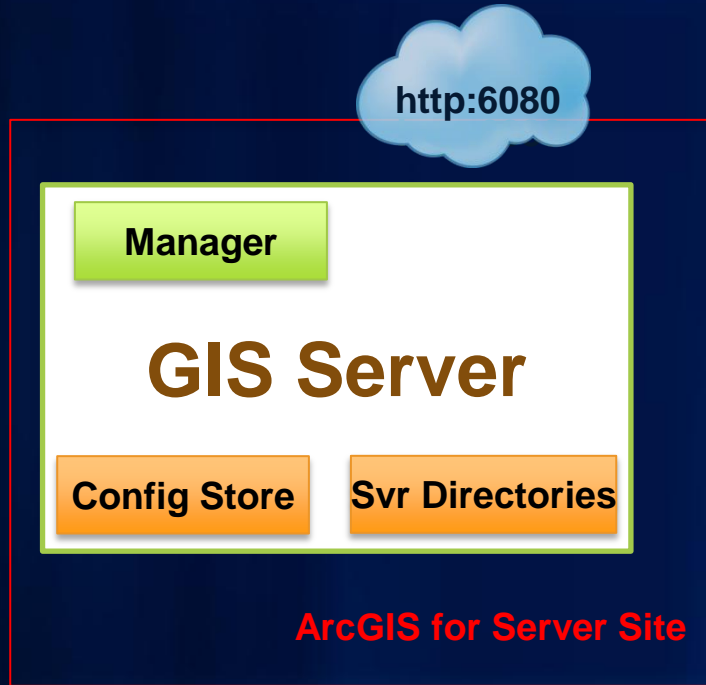


Installing ArcGIS Server 10.1

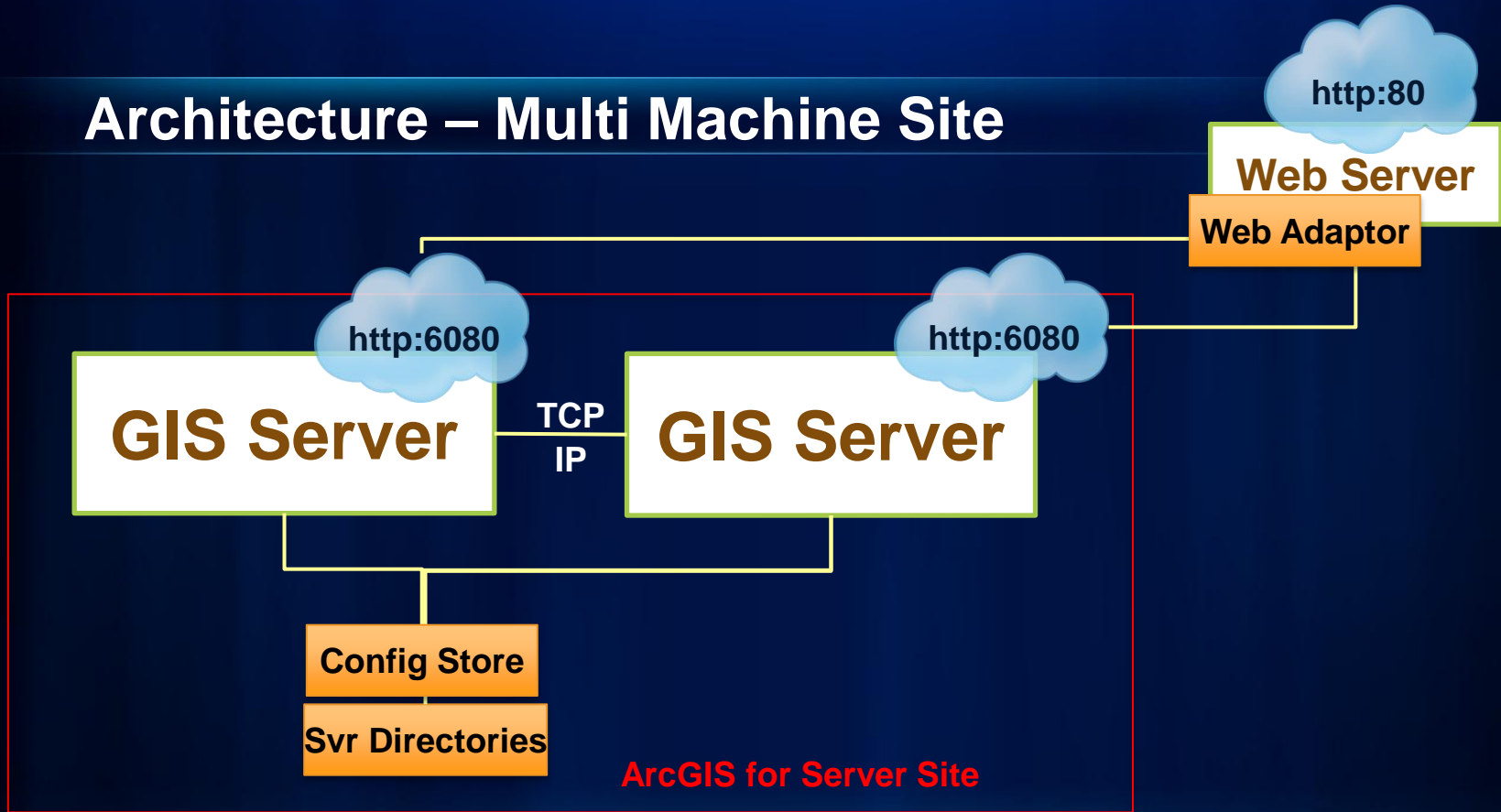
- **No install dependencies**
- **Faster setup time**
 - **Cut time in half**
- **Must be 64 bit operating system**
- **Setup launches Software Authorization Wizard**
- **ArcGIS Server Manager is opened after software authorization completes**

Architecture

Architecture – Single Machine Site



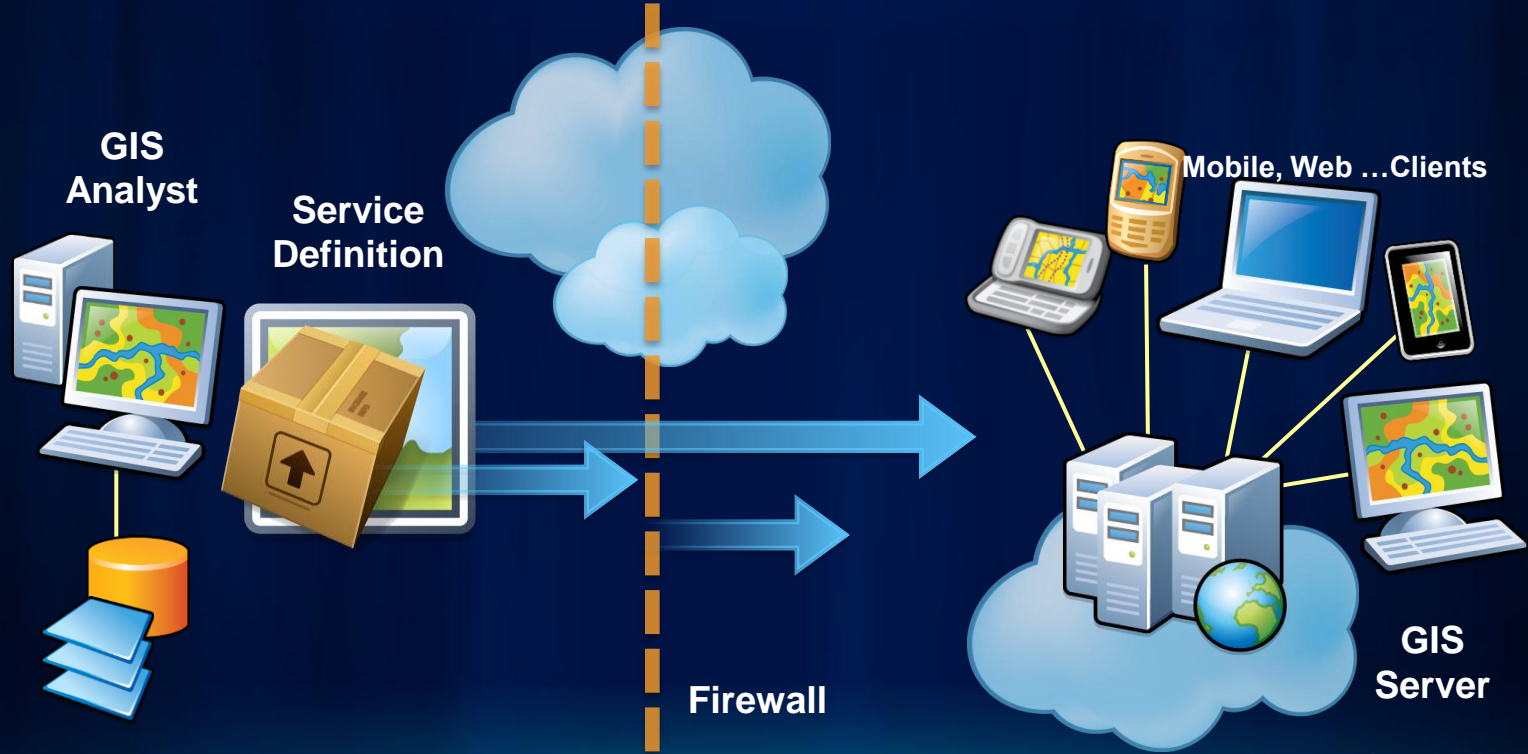
Architecture – Multi Machine Site



Configuration & Management

Completely Web Based

New Publishing Experience



New Publishing Experience

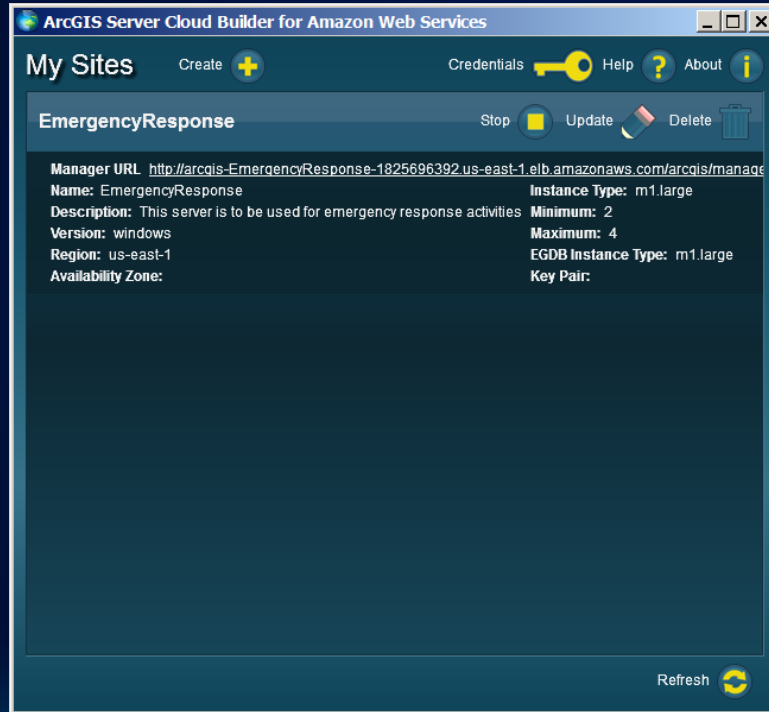
Share As

Cloud

- Enhanced **Amazon** support
 - Linux, Async GP, Caching, Publishing, Launching
- Support for **Azure**
- Private Clouds
 - Cloud burst
 - VM Ware

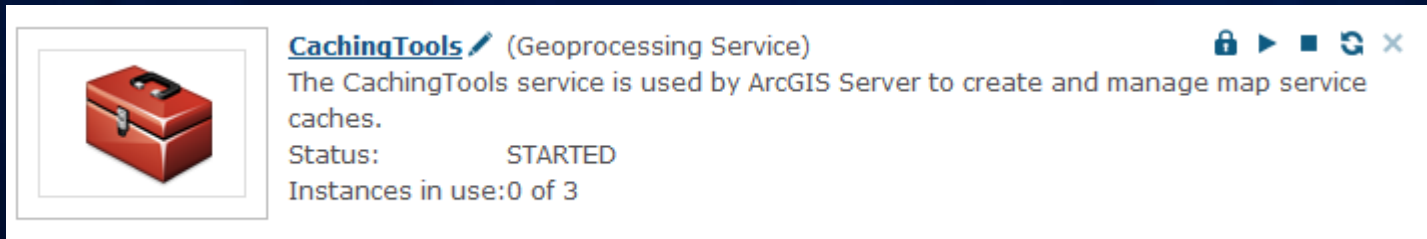


ArcGIS Server Cloud Builder



Caching

- New **CachingTools** Service
- Cache Image Services Directly



The screenshot shows a service card for 'CachingTools' in a software interface. On the left is a red toolbox icon. To its right, the service name 'CachingTools' is underlined and followed by '(Geoprocessing Service)'. In the top right corner of the card are icons for lock, play, stop, refresh, and close. Below the name is a description: 'The CachingTools service is used by ArcGIS Server to create and manage map service caches.' The status is 'STARTED' and the number of instances is '0 of 3'.

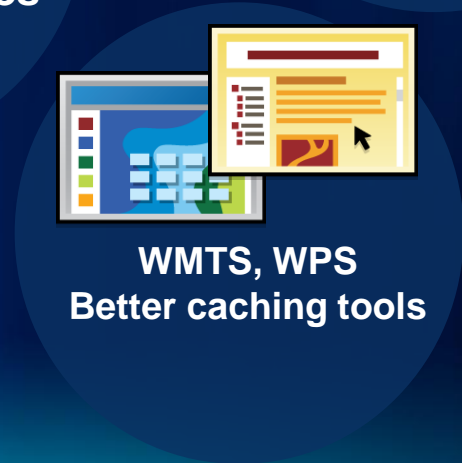
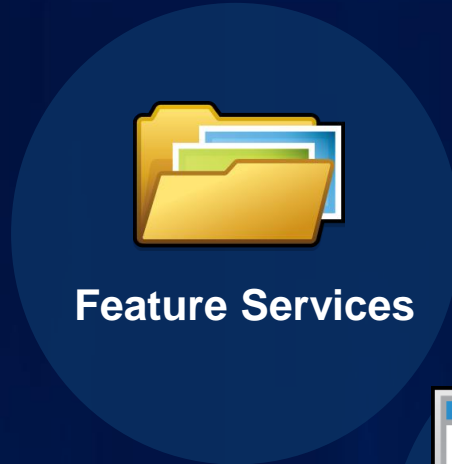
CachingTools (Geoprocessing Service)

The CachingTools service is used by ArcGIS Server to create and manage map service caches.

Status: STARTED

Instances in use:0 of 3

Functional Enhancements



Performance

Fast Drive Times

Map Services

Dynamic Layers

Export Web Map

On-demand high quality printing

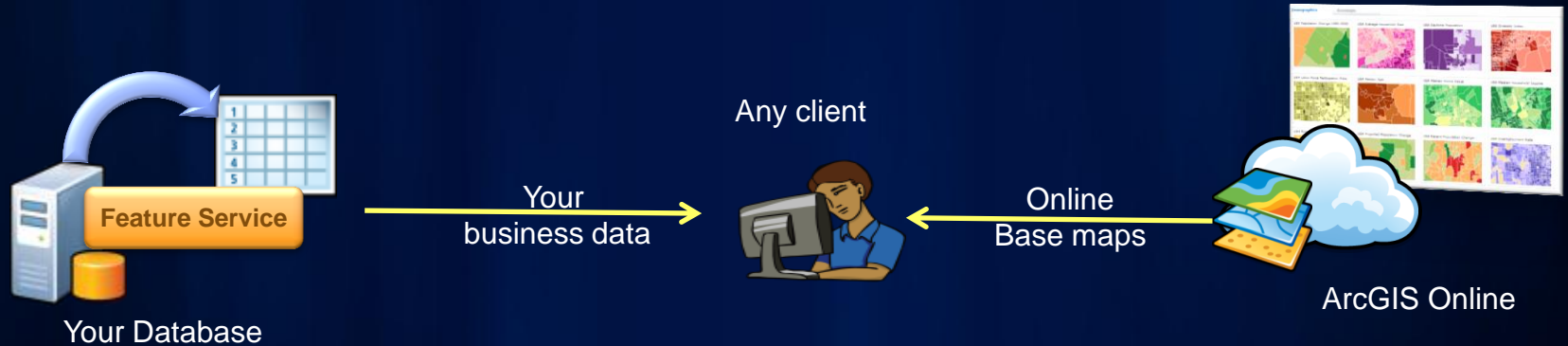
Feature Services

Feature Service in all editions
Ownership-based data access

Spatial Data Server

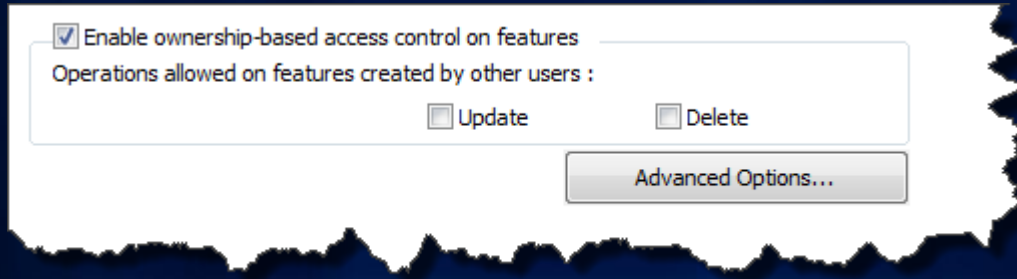
Lightweight REST GIS Web Services

for spatially aware databases



Ownership-based Access Control

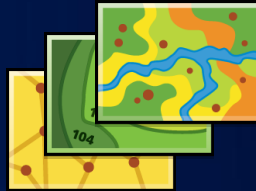
- Leverage new Editor Tracking in web apps
- Tracks who's editing what and when
- Exposed through Feature Service



Enhanced OGC Support

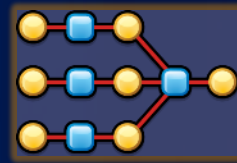


Cached Maps



WMTS

Geoprocessing



WPS

Getting Ready for 10.1

- **Make sure you have 64-bit servers and O/S**
- **Move away from publishing MXDs**
- **Migrate Server Manager Apps to Client-side APIs**
- **Review usage of ArcObjects**
- **Use SOE pattern where ArcObjects necessary**

Data Providers



Additional Information

- **Considerations for ArcGIS Server developers: A look toward 10.1** <http://bit.ly/mTELL7>
- **ArcGIS for Server Technology at 10.1** <http://bit.ly/mZORTC>
- **Deprecation Plans for ArcGIS 10.0 and 10.1** <http://bit.ly/q9OMHi>

Thank you

Questions?



esri Australia